

est 1979

Jeremy
Leaf & Co.



Lodge Lane, London

£695,000

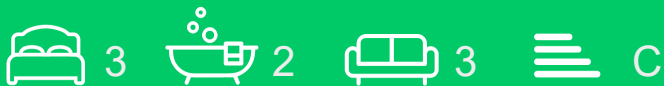
- Three Bedrooms
- Family Bathroom
- Kitchen/Diner
- South-Facing Secluded Garden with Shed
- 0.3 miles to Woodside Park (Northern Line) tube
- Through Reception
- Upstairs Shower Room
- Heated Lean-to/Third Reception
- Council Tax Band E
- Proximity to North Finchley High Road and amenities

863 High Road, London, N12 8PT
020 8446 4295

property@jeremyleaf.co.uk
<https://www.jeremyleaf.co.uk/>

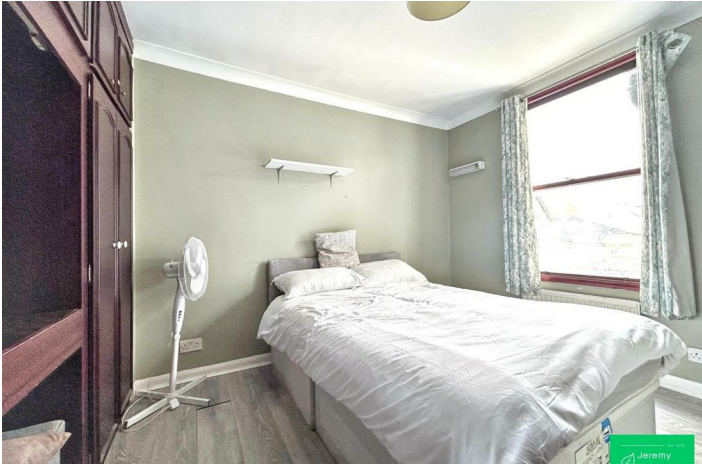
Lodge Lane, London, N12 8JJ

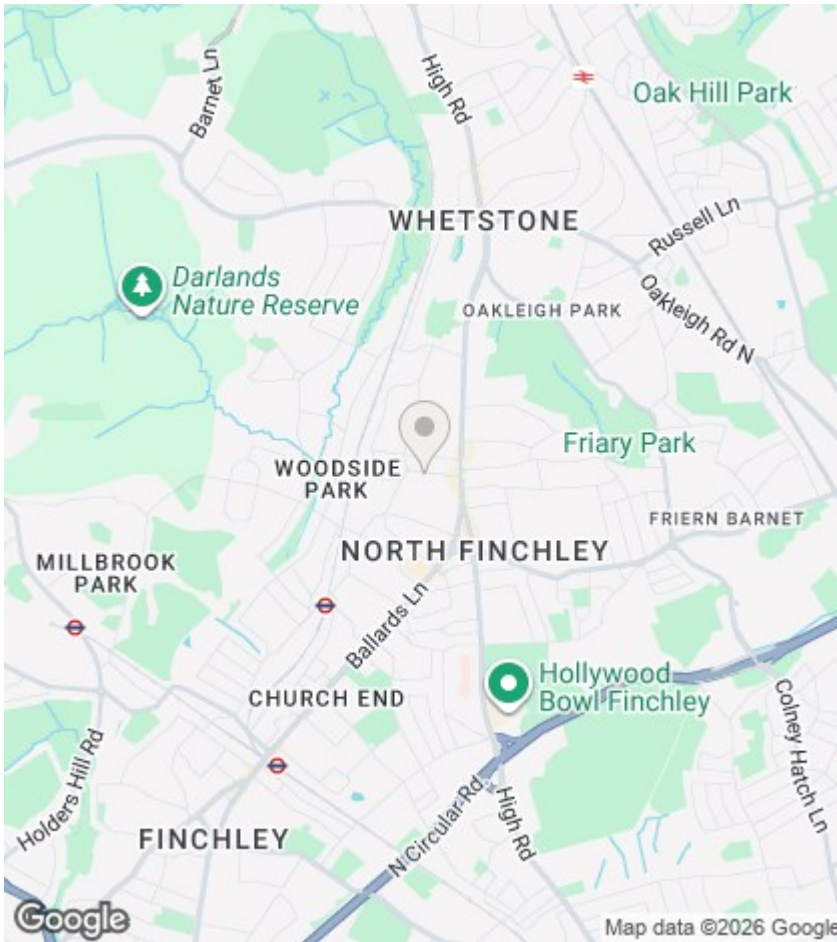
This well-presented cottage-style terraced house comprises three bedrooms (two doubles and one single) and a through lounge, as well as a kitchen/diner and two bathrooms. Outside, the south-facing private rear garden has a paved side return, established planting, shed and a versatile outbuilding currently fitted out as a garden room that could serve as a studio, gym or hobby space. This property is ideally located just 440ft from the shops and amenities of North Finchley High Road and only 0.3 miles from Woodside Park Underground station, as well as sought-after primary and secondary schools. Available chain-free, viewing recommended.



Council Tax Band: E







Directions

Viewings

Viewings by arrangement only. Call 020 8446 4295 to make an appointment.

EPC Rating:

C

Energy Efficiency Rating		Current	Potential
Very energy efficient - lower running costs			
(92 plus) A			88
(81-91) B			
(69-80) C		71	
(55-68) D			
(39-54) E			
(21-38) F			
(1-20) G			
Not energy efficient - higher running costs			
England & Wales		EU Directive 2002/91/EC	

Approx Gross Internal Area
100 sq m / 1077 sq ft



This floorplan is only for illustrative purposes and is not to scale. Measurements of rooms, doors, windows, and any items are approximate and no responsibility is taken for any error, omission or mis-statement. Icons of items such as bathroom suites are representations only and may not look like the real items. Made with Made Snappy 360.